

LiftKey System

User manual



SES - Santos Electronic Solutions

Rua Almeida Garrett, 11

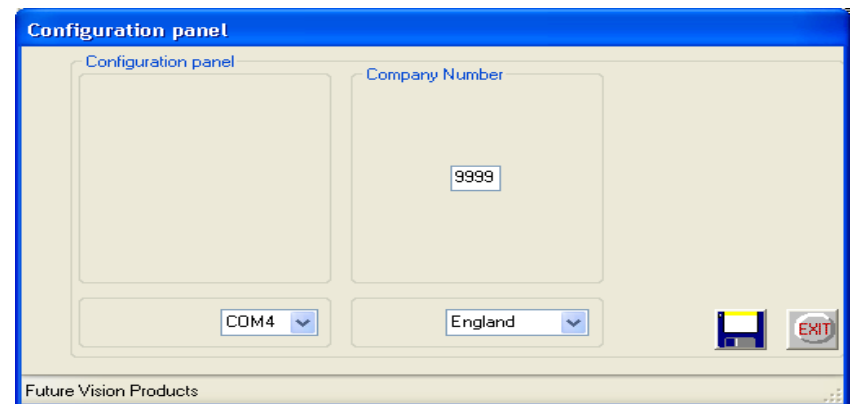
4715-559 Braga – Portugal

Tel/Fax: +351 253276159

Mobile: +351 933410557

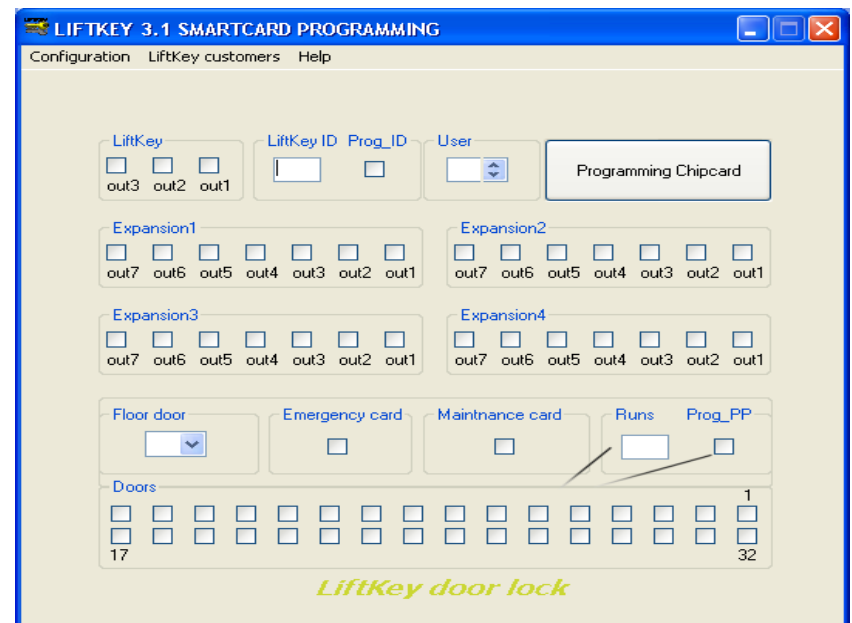
geral@ses-electronic.com

When you start the program for the first time it automatically shows in the configurations dialog the serial port(s) found in the PC and the intended language. This are important settings, so they might be choosen and confirmed with the Floppy symbol button. The LiftKey is supplied with 3 languages, Portuguese, English and German, other languages can easily be added by the user editing the file "lkdici.txt".



Important: All the LiftKey units are supplied preprogrammed with the ID "1234" and the Company Nr. "9999"
Programm a new ID in the LiftKey before using it for the first time. During this process the company number are automatically programmed also in the LiftKey unit.

Programming the ID Nr. in the LiftKey unit: Introduce the Chipcard in the LiftKey unit and write in the Edit "LiftKey ID" the 4 wished numbers for the ID of the LiftKey unit or choose one from the Database, set the checkbox **Prog_ID** and then press the button **Programming Chipcard**. Now the green led change its state followed by 10 sequential beeps in the PC speaker to indicate the beginning of the programming, followed by a one low frequency sound, then the green led lights for 3 seconds and goes OFF again. To test the success of the programming of the ID Nr. it must remove the Chipcard of the LiftKey unit, disconnect from the power supply and connect it again. The programming are successfull case the green led is OFF.



LiftKey Database: Insert all the data for the Liftkey units in the Database, as well select all the buttons from the Liftbuttons panel used for the LiftKey units and then select the outputs to for the intended expansions boards if exists.

Through the button **Memo** it is possible to insert, save and show additional notes about the LiftKey unit.

In the **Lifts** Edit it's **must** to select the quantity of Liftkey units existing in the elevators in the building.

Block the users Chipcards: Through the Menu **LiftKey customers**, it's possible to select up to 20 users numbers to which it intends to block or unblock the respective Chipcards.

Choose the intend LiftKey unit in the Database and introduce a Chipcard in the LiftKey unit and select the user(s) numbers that it intends to block or to unblock and confirms with the button **BLOCK** in the Database dialog. The green led change its state followed by played 20 sequential beeps in the PC speaker to indicate the beginning of the programming, followed again by a one low frequency sound, then the green led stay blinking indicating that the creation of the block/unblock Chipcard was successfully.

The next step is to remove the created block/unblock Chipcard from the LiftKey unit and introduce it in the existing Liftkey units in the elevators in the building.

After the introduction of the Chipcard the green led of the LiftKey unit is blinking indicating that the operation was successfull, then remove the Chipcard from the unit and repeats the operation in the remains LiftKey units in the elevators.

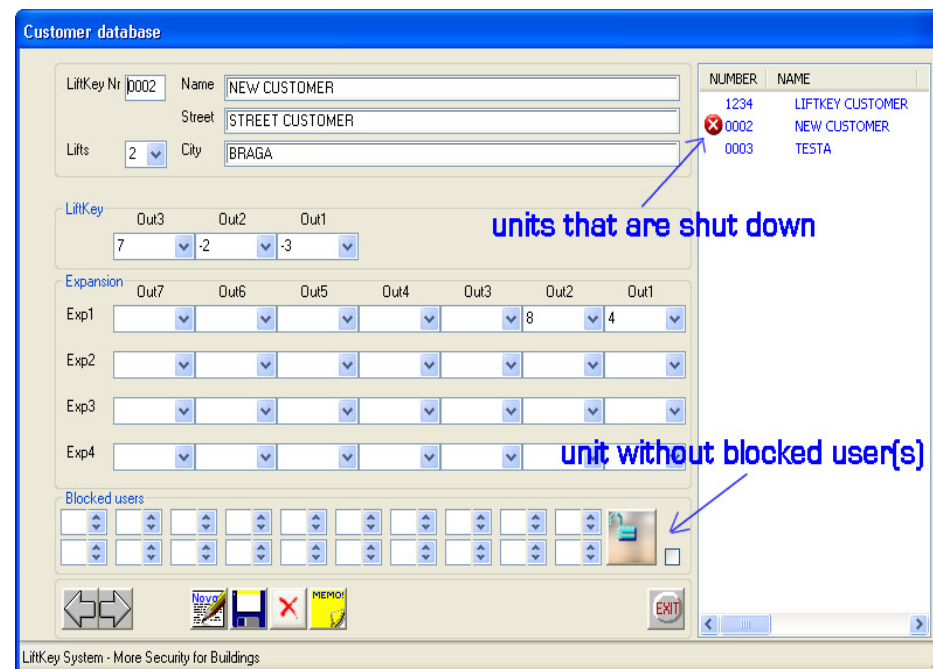
Activate or deactivate completely the LiftKey unit: (NOT ACCEPT ANY CHIPCARD except **Emergency, Block/Unblock Chipcards**).

Deactivate the LiftKey unit: Select the LiftKey in the Database and set the Checkbox **On/Off** and confirm it with the button **BLOCK**.

The green Led blink fast indicating that the operation is concluded.

Followed introduces this Chipcard in all the LiftKey units of the existing elevators in the building. To indicate that the LiftKey unit is disabled, the green led blink slower without inserted Chipcard until the unit to be activated again.

To activate the LiftKey unit, select the LifKey in the Database and introduce a Chipcard and confirms that the **On/Off** checkbox is **NOT** set and press the **Block** button, followed introduces this Chipcard in the LiftKey units of the existing elevators of the building.



Programming the LiftKey Chipcard: Introduce the Chipcard in the LiftKey unit and setting at least one of the outputs in the **LiftKey** area, then has the possibility to insert the ID Nr. of the LiftKey unit for which desires to program a Chipcard or to leave the **LiftKey ID** Edit empty, in this case the Chipcard is programmed for the LiftKey unit in which the Chipcard is inserted. Followed select the Apartment Nr. 1 up to 254, this number **must** be chosen to allow the block or unblock function to use these Chipcards in the LiftKey units in the elevators of the building.

Case the Chipcard to program must have access to the doorlocks of the stairs, it must also mark the respective Checkboxes. After confirm with the Button **Programming Chipcard**, the green led change it state followed by 10 sequential beeps in the PC speaker to indicate the beginning of the programming, followed by one low frequency sound again, then the green led blink 4 times.

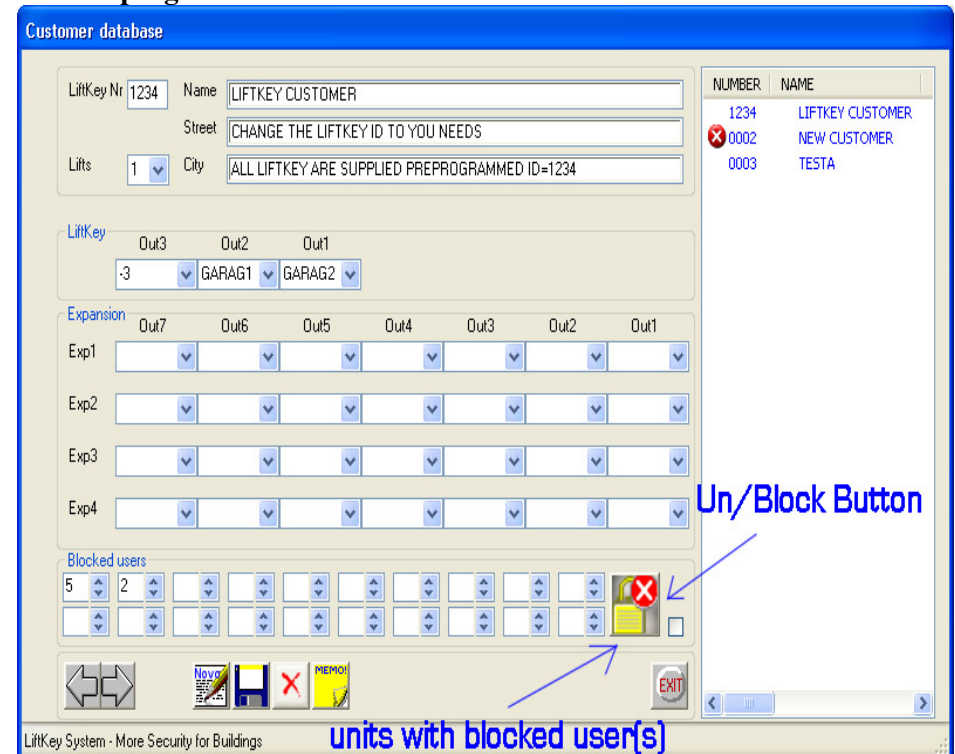
To test the success of the programming, it must remove the Chipcard from the LiftKey unit and introduce it again. If the Chipcard was programmed for the LiftKey unit where it is introduced, the green led lights indicating that the Chipcard is valid as well the green led(s) from the LiftKey unit and the Expansion boards (if exists), output(s) that they had been selected when programming the Chipcard.

Programming of the LiftKey Doorlocks: To program the doorlocks for the access to the stairs of the buildings, select in the box **Floor door** the door of the floor for which desires to program the lock and confirms with the button **Programming Chipcard**.

Programming Emergency Chipcard: Introduce a Chipcard in the LiftKey unit and set the Checkbox **Emergency Card**, insert the LiftKeyID number if desired and confirm with the **Programming Chipcard** Button.

The Emergency card allows the access to all the floors used in the LiftKey units, that is even shut down.

Notice: **The LiftKey units only accept Chipcard as valid they have been programmed for his ID number.**



Programming pre payed runs: Introduce a programmed LiftKey Chipcard in the unit and write the desired quantity of runs (max 9999) in the field "RUNS" and set the "Prog_PP" Checkbox and confirm with "**Programming Chipcard**".

This process does **not alter** the data already existing in the card.

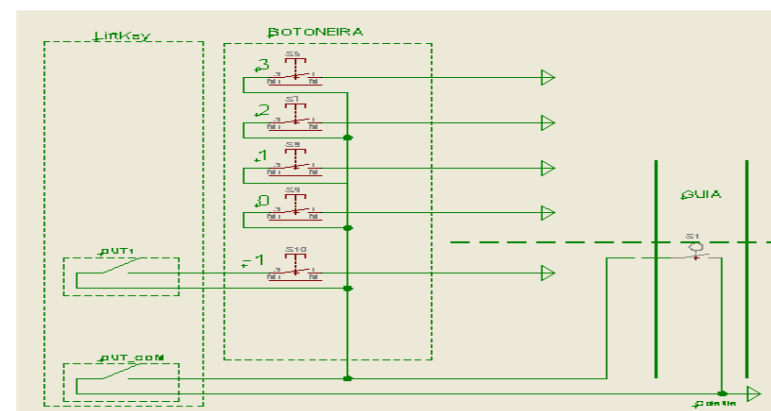
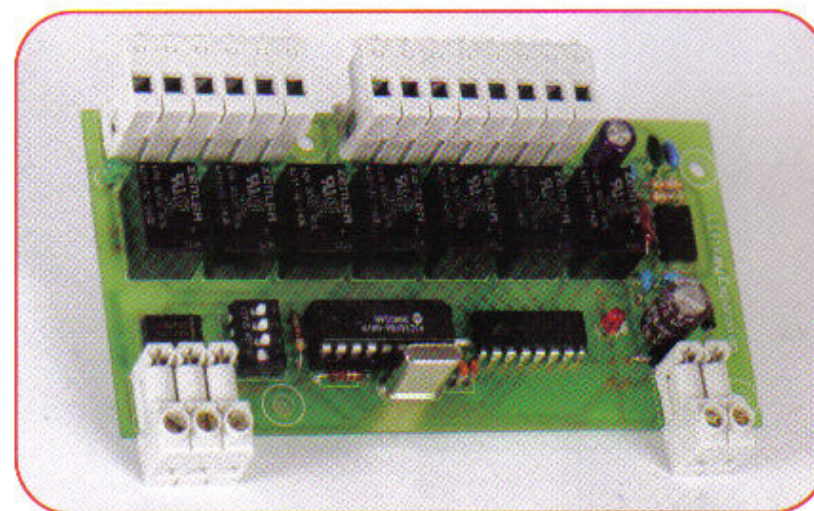
Trough this functionality the LiftKey System can be used in other business areas like private parking, etc.

To programm Chipcards for the Maintnace personal set the "**Maintnace card**" Checkbox and confirm with "**Programming Chipcard**", if desired add runs to this cards to, repeat the above process "**Programming pre payed runs**"

Expansions boards: The LiftKey system supports up to 4 expansions boards. Before using the expansions boards for the first time it must be select the position of the DipSwitch, which define the ID Nr. of the expansionsboard so that these are recognized for the system.

<u>Expansion 1</u>	<u>Expansion 2</u>	<u>Expansion 3</u>	<u>Expansion 4</u>
DIP 1 _ ON	DIP 1 _ OFF	DIP 1_ OFF	DIP 1 _ OFF
DIP 2 _ OFF	DIP 2 _ ON	DIP 2_ OFF	DIP 2 _ OFF
DIP 3 _ OFF	DIP 3_ OFF	DIP 3_ ON	DIP 3 _ OFF
DIP 4 _ OFF	DIP 4_ OFF	DIP 4_ OFF	DIP 4 _ ON

Through the Submenu **Help** can be showed 3 examples of electric connections for the use of the LiftKey system.



Status indication through the green led

Blinks 2 times **without** chipcard introduced = **LiftKey unit blocked**

Blinks 3 times with introduced chipcard = **Chipcard is blocked**

Blinks 4 times with introduced chipcard = **Chipcard programming ready**

Blinks 6 times with introduced chipcard = **Chipcard with credit less than 20 maneuvers**

Blinks 7 times with introduced chipcard = **Chipcard without maneuvers credit**

Blinks 8 times with introduced chipcard = **Wrong company maintenance Chipcard**

Blinks 10 times with introduced chipcard = **Unknown Chipcard**

Support: If exists difficulty or doubt, please does not hesitate to call our support staff.

